



MIR-AUS

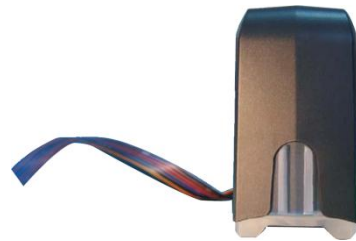
Tel: 02 8065 5614

1300 213 589

www.mir-aus.com

info@mir-aus.com

INSTALLATION INSTRUCTIONS FOR TX810FW TX710W TX800FW TX700W



CISS FLY V.3



CISS MBOX V.2

1. Keep out of reach of children. Seek medical advice if taken.
2. Avoid exposure to direct sunshine and don't keep it at high or freezing temperatures.
3. Avoid Knocks and bumps.
4. Please avoid taking out the cartridges after installing the CIS ink system, where possible.
5. This product is designed to operate within 10-40 degrees Celsius.
6. The CIS ink system has passed strict compatibility check, so we suggest using our ink and cartridges to maintain printer quality.
7. Mixing two different brands of ink into the CISS is not recommended
- 8. Keep the tank and printer at the same level. Do not place the tanks higher or lower than their printer.**

CISS MBOX V.2

STEP ONE

When you first install a CISS unit into your printer (and before using it), you must create an appropriate air balance inside your tank.
Please see the photos below.

Remove all the plugs from the tanks.
(But don't remove the plugs from the cartridges)

Notes:
After using your CISS for some time please check the level of the ink in the reserve ink compartment. If it is below 2cm it is now time to order more ink and refill the compartment. (check out our website for very inexpensive high quality ink). It is important to keep using the same ink in your system. Adding another brand of ink which mixes with your existing ink in the system can block the printer nozzle.



Ink level

Remove all **tanks** plugs.



CISS FLY V.3

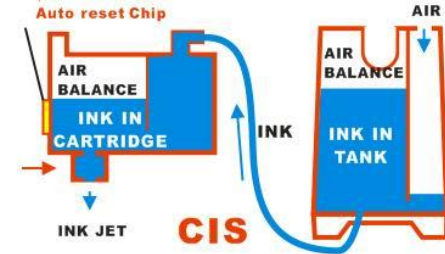
STEP ONE

When you first install a CISS unit into your printer (and before using it), you must create an appropriate air balance inside your tank.

Please see the photos below.

Remove all the plugs from the tanks.

(But don't remove the plugs from the cartridges)

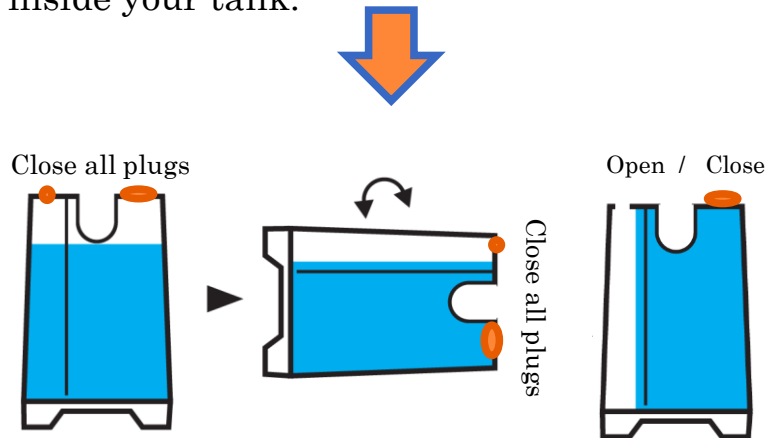


Each Fly CISS tank has 2 separate compartments:

a reserve ink compartment (where ink is stored to be fed into the air balance compartment. This is the wider of the two compartments)

an air balance compartment (which is always mostly empty. This is the narrower of the two compartments)

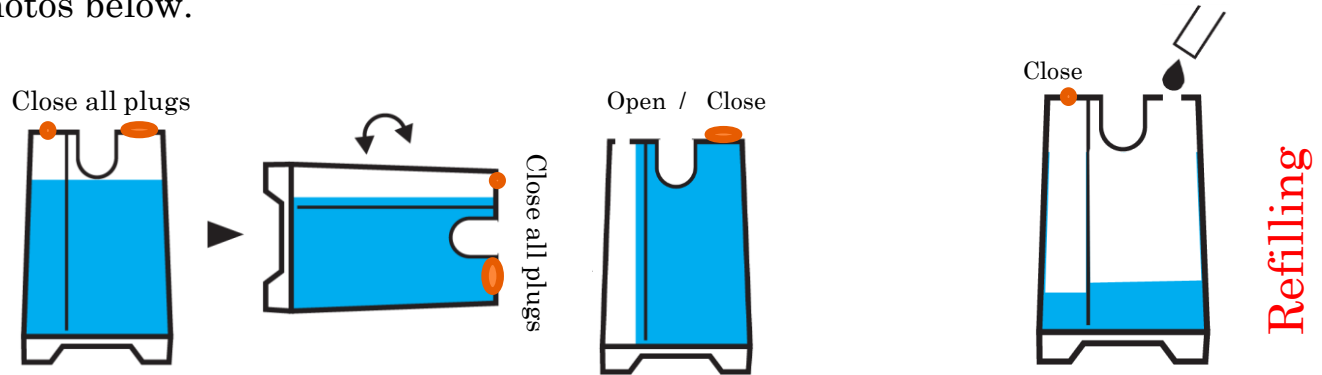
When you first install a CISS unit into your printer (and before using it), you must create an appropriate air balance inside your tank.



Trouble shooting for CISS FLY V.3:

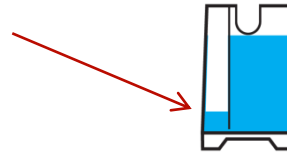
It is very important that there is mostly air in the air balance compartment (so not more than 2cm of ink).

After shipping and handling, if there is more than 2 cm of ink in the air balance compartment, make sure the holes are plugged and sit the unit on its side (reserve ink compartment side down) for five seconds or so to let the ink drain out of the air balance compartment into the reserve ink compartment. See the photos below.

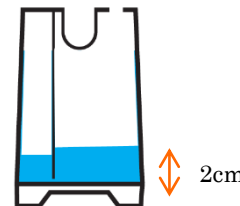


Notes:

1. your system will automatically find the correct balance of ink for the air balance compartment (to give the CISS the correct air pressure so don't worry about the actual level- it may be between 0.5cm and 1.5cm approximately)



2. after using your CISS for some time please check the level of the ink in the reserve ink compartment. If it is below 2cm it is now time to order more ink and refill the compartment. (check out our website for very inexpensive high quality ink). It is important to keep using the same ink in your system. Adding another brand of ink which mixes with your existing ink in the system can block the printer nozzle.

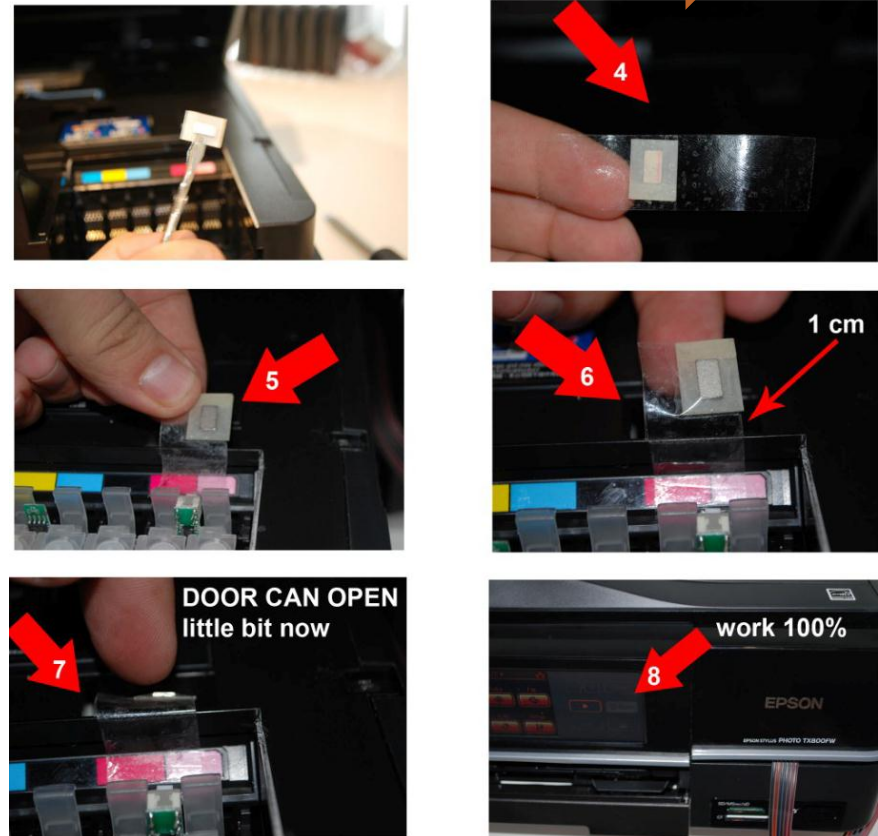




PLEASE READ PRIOR TO MAKING A PURCHASE OF THIS PRODUCT

Installation of the TX700 and TX800

Installation of the CISS unit requires you to remove a small magnetic sensor from the printer which takes only a few minutes. If required the sensor can be replaced at a later time if the CISS unit was removed for any reason. A comprehensive manual is included with your kit. The following images give a brief overview of the installation.



It is also important that you place the external tanks next to (so level with) your printer. Don't put them at a higher or lower elevation than your printer as this may affect the flow of your ink from the tanks to the cartridges inside the printer)

Reset cartridges

There are chips on the end of each cartridge which have a 'memory' of how much ink you have used. Printers also have a 'memory' of your usage. These memory systems assume you've run out of ink when you have consumed a certain amount. They don't realise that you have a large external tank feeding your cartridges. So after some time you'll get a message on your PC screen telling you to replace your cartridges. Check your ink level in the external tanks. Most likely there will still be an ink in these tanks. If this is the case, you'll need to reset the chips using the little white reset button on the cartridge.

Simply press and **hold** the white reset button on the cartridge for 3-4 seconds.



This product is not sanctioned or manufactured by Epson and users must be aware that the use of third party cartridges and CISS systems can void your printer warranty.

PLEASE NOTE THESE ARE NOT EPSON PRODUCTS AND NOT EPSON BRANDED INK. THE TRADE NAMES REMAIN THE PROPERTY OF THE INDIVIDUAL COMPANIES AND "EPSON" IS USED SOLEY AS A MEANS OF CLARIFICATION.