



Tel: 02 80 6556 14
1300 213 589
www.mir-aus.com.au
info@mir-aus.com.au

INSTALLATION INSTRUCTIONS FOR ALL EPSON PRINTERS



CISS
MBOX V.2

1. Keep out of reach of children. Seek medical advice if taken.
2. Avoid exposure to direct sunshine and don't keep it at high or freezing temperatures.
3. Avoid Knocks and bumps.
4. Please avoid taking out the cartridges after installing the CIS ink system, where possible.
5. This product is designed to operate within 10-40 degrees Celsius.
6. The CIS ink system has passed strict compatibility check, so we suggest using our ink and cartridges to maintain printer quality.
7. Mixing two different brands of ink into the CISS is not recommended
- 8. Keep the tank and printer at the same level. Do not place the tanks higher or lower than their printer.**

CISS MBOX V.2

STEP ONE

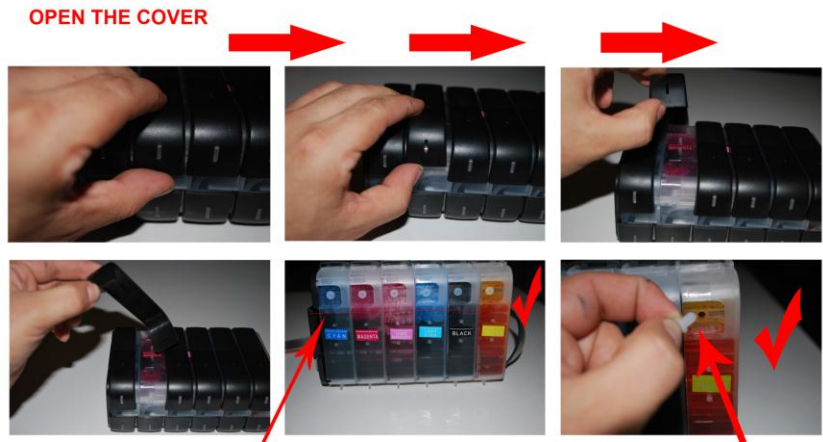
When you first install a CISS unit into your printer (and before using it), you must create an appropriate air balance inside your tank.

Please see the photos below.

Remove all the plugs from the tanks.
(But don't remove the plugs from the cartridges)

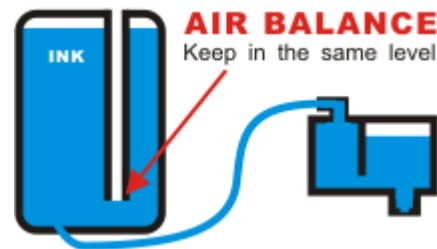
Notes:

After using your CISS for some time please check the level of the ink in the reserve ink compartment. If it is below 2cm it is now time to order more ink and refill the compartment. (check out our website for very inexpensive high quality ink). It is important to keep using the same ink in your system. Adding another brand of ink which mixes with your existing ink in the system can block the printer nozzle.



Ink level

Remove all tanks plugs.



CISS MBOX V.2

INSTALLATION INSTRUCTIONS NEXT STEP

Install the ink system

Manually move ink cartridge holder to the left. (if your printer has a middle bar)

Install the ink System Component into the left side of the printer frame, through the frame divider and Place it to the right of printer as shown above.

Move ink cartridge holder back to original 'change' cartridge position.



Change position



Looking into the printer from above, install the support clip(s) as shown. The one on the left (in the photos below) is called a *T-bar clip* and the one on the right is called a *square clip*. We have attached some photos below of various printers. Some printers use a T-bar clip, some a square clip and some printers use both.

The function of the clip is to attach the pipeline (through which the ink travels from the tanks outside the printer to the cartridge inside the printer) to the printer frame so that the printer head (with its attached cartridge) can move easily but not tangle or block the pipeline.

After you have attached the pipeline with the clip(s) check that it has enough slack so that the printer head can move through its entire range without stretching the pipeline or potentially blocking it.

Clip the tube.

Slide the tube to the right as far as possible, making sure the tube is straight.



C79/C90/C91/C92/D78/D92



R270/R260/R265/R390/RX590/RX580/RX595/RX680



R280/R285/R290/R380



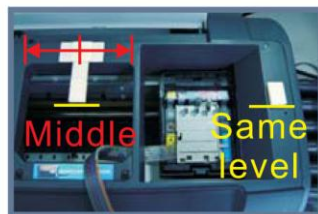
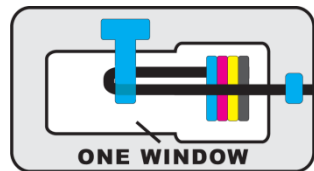
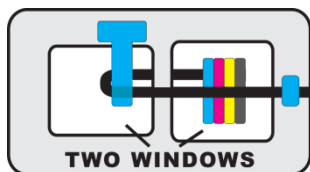
C110/C120/D120



CX3900/CX4900/CX5500/CX5600/CX5900/
CX7300/CX8300/CX7400/CX5505/DX4400/DX7400



1390/1400/1410



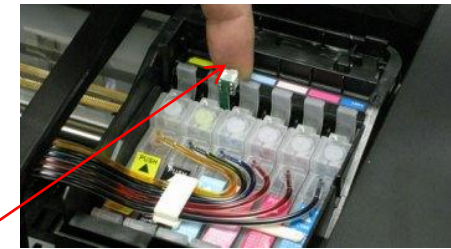
It is also important that you place the external tanks next to (so level with) your printer.

Don't put them at a higher or lower elevation than your printer as this may affect the flow of your ink from the tanks to the cartridges inside the printer)



Reset cartridges

There are chips on the end of each cartridge which have a 'memory' of how much ink you have used. Printers also have a 'memory' of your usage. These memory systems assume you've run out of ink when you have consumed a certain amount. They don't realise that you have a large external tank feeding your cartridges. So after some time you'll get a message on your PC screen telling you to replace your cartridges. Check your ink level in the external tanks. Most likely there will still be an ink in these tanks. If this is the case, you'll need to reset the chips using the little white reset button on the cartridge.



Press the red flashing button on the printer to get the print head to the “**replace cartridge**” position. Simply press and **hold** the white reset button on the cartridge for 3-4 seconds. (If you have an older-style cartridge (pre-2008) you won't have a white reset button. In this case you'll need to remove the cartridge and put it back in. You'll then need to turn off and then turn on your printer.) Now press the red flashing button on the printer. Your cartridges are now reset.

It is important to note – the cartridges cannot be reset at just any point – the Epson ink monitor must report out of ink (for any cartridge), and then a reset of all cartridges can be done. Once reset, all chips report full cartridges.