



MIR-AUS

Tel: 02 80655614

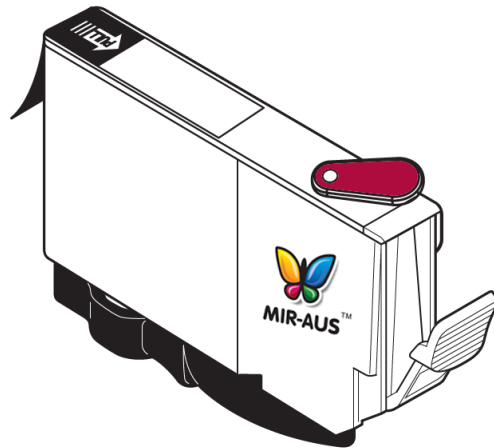
1300 213 589

www.mir-aus.com

www.mir-aus.com.au

info@mir-aus.com

INSTALLATION INSTRUCTIONS FOR ALL CANON REFILLABLE CARTRIDGES

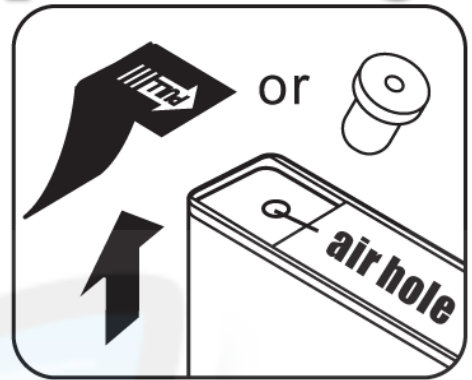


1. Keep out of reach of children. Seek medical advice if taken.
2. Avoid exposure to direct sunshine and don't keep it at high or freezing temperatures.
3. Avoid Knocks and bumps.
4. Please avoid taking out the cartridges after installing the CIS ink system, where possible.
5. This product is designed to operate within 10-40 degrees Celsius.
6. The CIS ink system has passed strict compatibility check, so we suggest using our ink and cartridges to maintain printer quality.
7. Mixing two different brands of ink into the CISS is not recommended

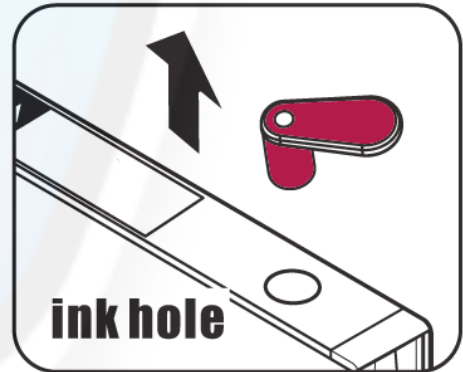
This Version of the refillable cartridges comes with Prefilled Cartridges and Auto Reset Chips. You just need to fill the Cartridges and print! The whole operation is very easy. It's really an effective tool to save your money.

How to fill/refill the Canon ink-jet printer cartridges

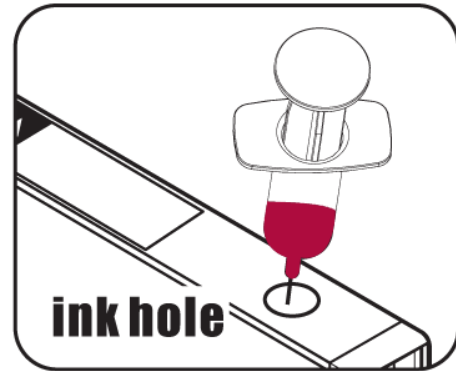
1-Remove the air-seal tape by pulling at the point marked "PULL".



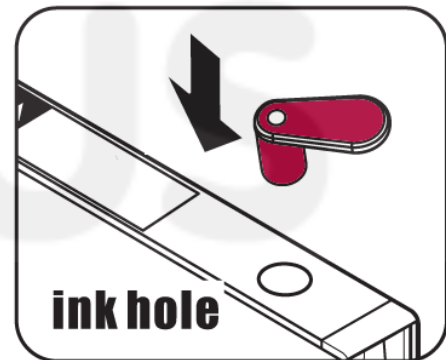
2-Remove the ink plug (colored rubber plug matching the ink color).



3-Each cartridge contains a white sponge. Use a syringe to fill in the cartridge with 10-12 milliliters of ink. When filling/refilling the cartridge with ink, allow some time for the sponge to absorb ink, then, add more ink to the cartridge to compensate for the amount absorbed by the sponge.



4-Re-insert the colored ink plug into the ink-refill hole.



5-To install the cartridge into your printer, prepare the printer first. Then, using a finger (index or any other) cover the air-seal hole on the top of the cartridge and hold it tightly before removing the orange-colored cover from the bottom of the cartridge. Insert the cartridge into the printer before releasing the air-seal. Untimely releasing of the air-seal, will result in leakage of ink.

housing unit (ink inlet)



Printer head



Silicone washers

6-Keep the orange-colored covers in a safe place for later use (refilling)